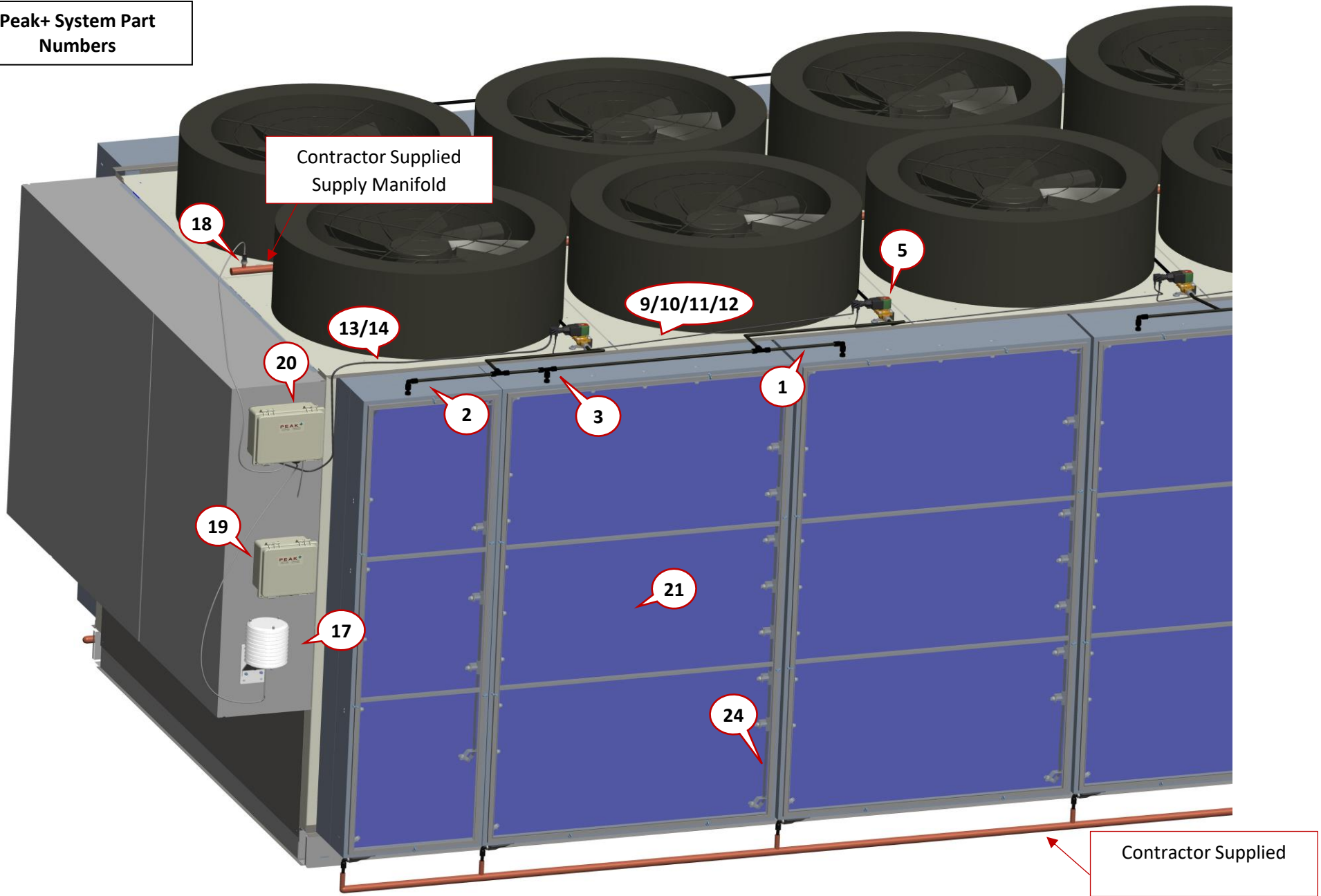


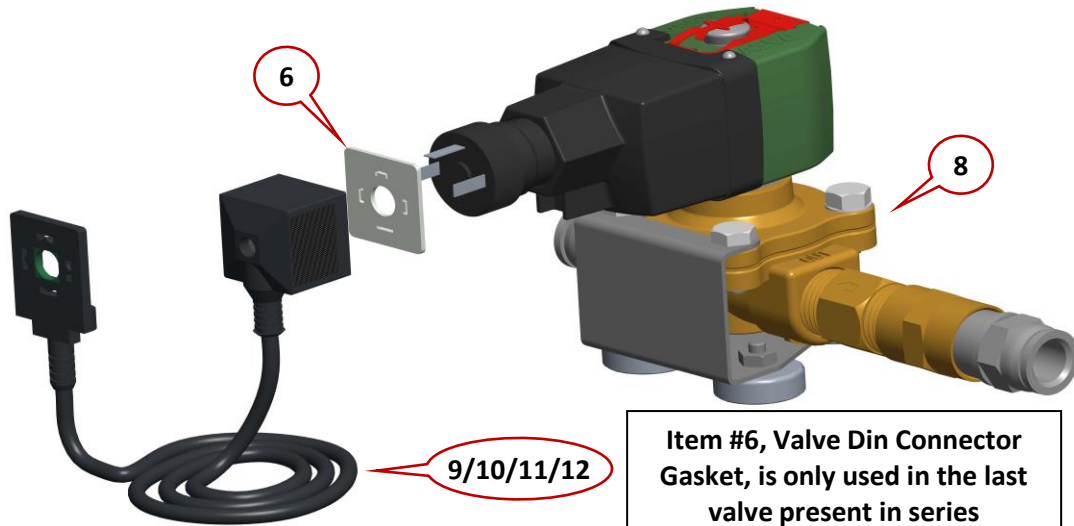
**Peak+ System Part
Numbers**

Item	Part #	Description
1	5016	Tubing, Black Nylon - 1/2 OD x .062 wall
2	5030	Fitting, Elbow- 1/2" FPTC
3	5032	Fitting, Tee, 1/2" FPTC
4	5033	1/2" MNPT x 1/2" FPTC Fitting
5	5034	Fitting, Elbow, 1/2" FPTC x 1/2" MPT
6	5323	Valve Din Connector Gasket
7	5353	Valve Assy, 40μ strainer, 24VAC, 8W
8	5354	Valve Assy, Low Pwr, 40μ strainer, 24VAC
9	5245	Connector Assy- 48" L MCCR Din
10	5246	Connector Assy- 72" L MCCR Din
11	5247	Connector Assy- 96" L MCCR Din
12	5248	Connector Assy- 120" L MCCR Din
13	5249	Pigtail Assy- 20ft MCCR Din
14	5297	Pigtail Assy- 50ft MCCR Din
15	3979 Rev. B	Temperature Sensor Assembly, Solid State, 25' Cable
16	4115 Rev. A	Current Transducer, 0-250 Amp, Split Core, 25' Cable
17	4178 Rev. C	Sensor Assy, High Performance DB/RH w/ Shield, 25' Cable
18	CES 4012 Rev. A	Sensor Assy, Water Distribution Pressure, 25' Cable
19	CES 4057 Rev. B	Controller Assy, Client, 2 Channel (CMC)
20	CES 4058 Rev. A-F	Controller Assy, Master, 2 Channel (CMM)
21	5002	Filter Media, NW Polyester, Cut to Size
22	5216	Tubing, EVA, Black, 1/2" OD, 3/8" ID
23	5221	Frame Drain, Full Drain, Molded, Black, Nylon, 1/2 FPT
24	5019	Tubing, Black Nylon - 3/8 OD x .050 wall
25	5024	Fitting, Sprayer Housing, 1/4 Turn
26	5025	Sprayer, 110 deg, .01 gpm, White
27	5026	Sprayer, 95 deg, .01 gpm, White
28	5027	Sprayer, 80 deg, .01 gpm, White
29	5028	Valve, Sprayer, 2-way Check, 2 psi cracking pressure
30	5029	Fitting, Tee, 3/8" FPTC x 1/4" FPT
31	5196	Fitting, Elbow, 3/8" FPTC x 1/4" FPT

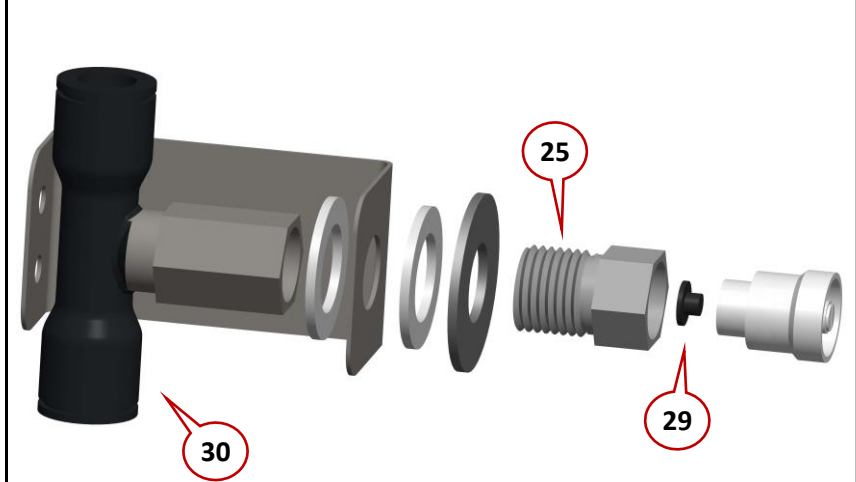
Peak+ System Part Numbers



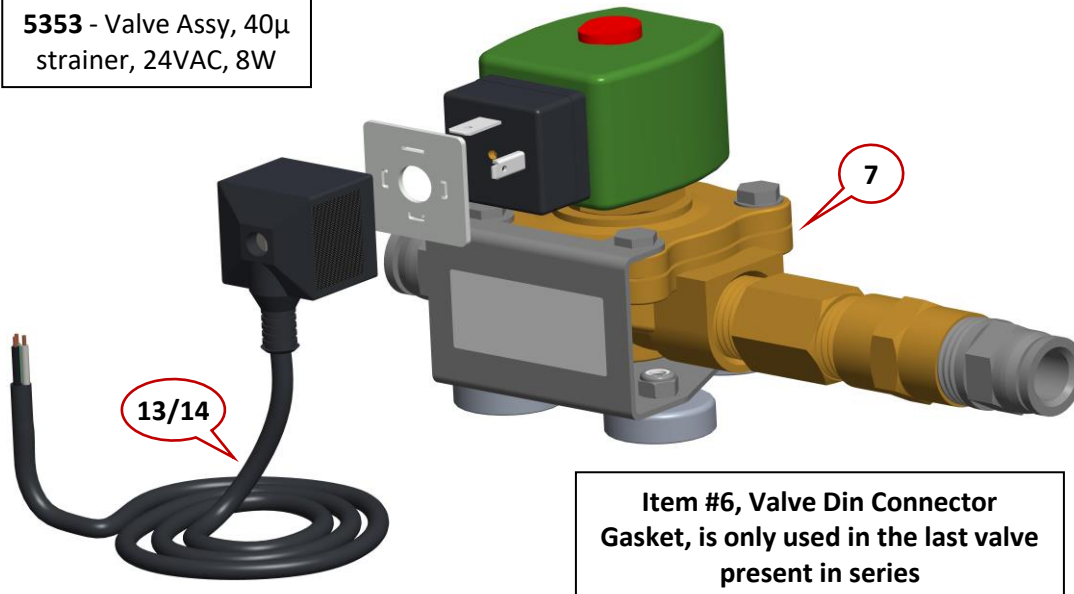
5354 - Valve Assy, Low Pwr, 40µ strainer, 24VAC



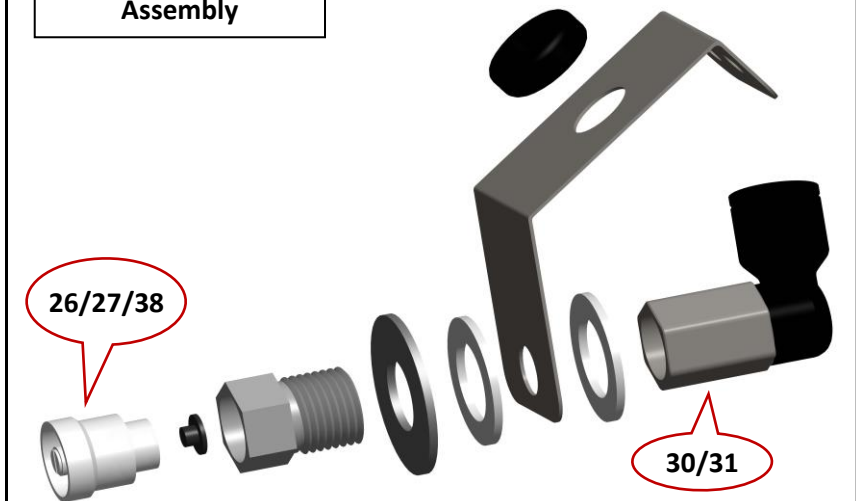
Side and Top Sprayer Assembly



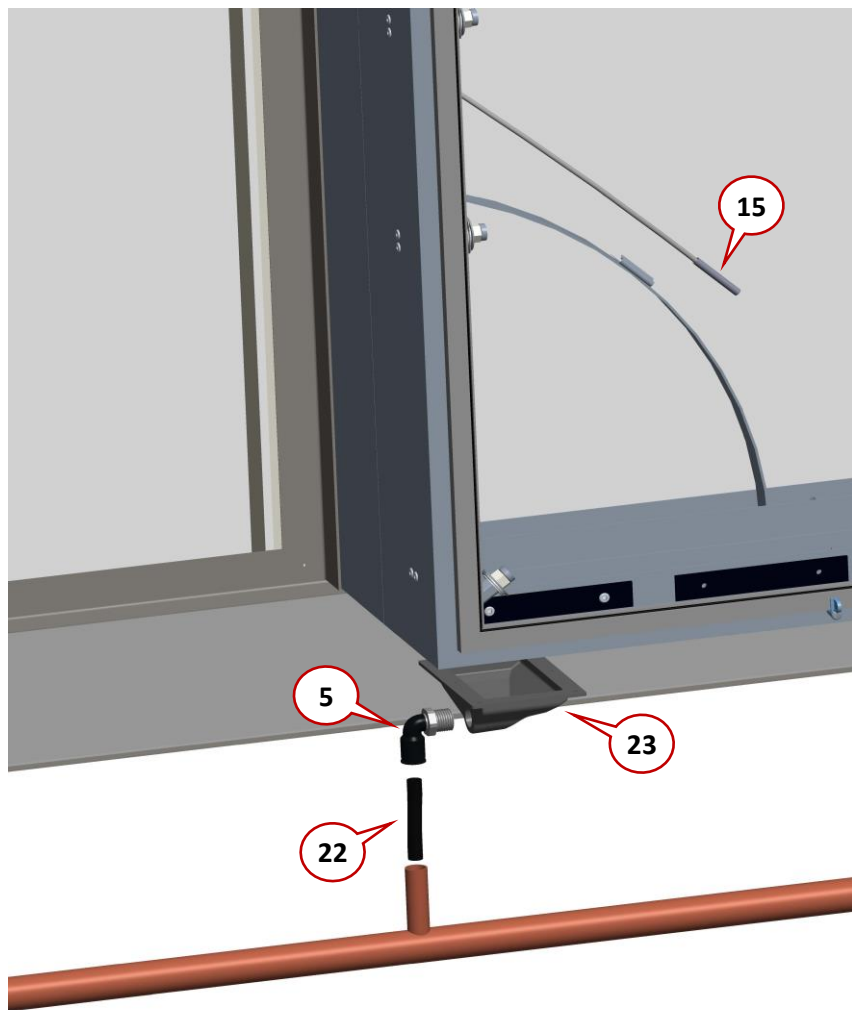
5353 - Valve Assy, 40µ strainer, 24VAC, 8W



Bottom and Top Corner Sprayer Assembly



Frame Corner Detail



System Sensors

Item #16, Current Transducer, 0-250 Amp, Split Core, 25' Cable
Each Current Transducer (CT) to be installed on compressor lead(s) of the associated circuit, located in the control cabinet. Some applications are installed on the fan leads. Note that different CT range options are available.



Item #15, Temperature Sensor Assembly, Solid State, 25' Cable.

Two sensors will be installed on frames as CA sensors. Two sensors will be installed as CL sensors onto the condenser liquid lines

