



## System Installation Scope of Work

by Peak+ ("Company")  
5100 Wilfong Road, Memphis, TN 38134  
(T) 901-382-7809 (F) 901-382-7819

### Initial Installation requirements:

- Installing Contractor must provide cleaning of HVACR condensing unit coils prior to Peak+ System installation with exception to newly installed HVACR unit(s)
- Contractor must provide and install Sheet Metal for support and air by-pass elimination on each designated HVACR unit as specified by the Peak+ System Engineered Documentation prior to Peak+ Pre-Cooler Media Frame installation.
  - Note: HVACR Systems w/ Aluminum or other non-magnetic chassis materials will require installing corrosion resistant magnetic sheet metal for perimeter frame support and a magnetic surface face for controller and valve box mounting as specified.

### Installation of Peak+ provided Frames and Controller Equipment will consist of:

- Magnetic mounting of Engineered Pre-Cooler Media Frames on the inlet face of condenser coils on each designated HVACR Unit
- Magnetic mounting of a designated Wireless Communicating Controller with associated Sensors on each HVACR unit
- Installing and terminating Controller associated Sensors on each designated HVACR unit
- Installing and wiring Controller Power Supply Transformer and Fuse Block kit on each designated HVACR unit
- Magnetic mounting and wiring of Water Solenoid Valves on each designated HVACR unit
- System and Controller Commissioning and Startup
- Customer Controller Dash Board access to system performance data

### Installation of Water Connection Equipment will consist of installing:

#### Peak+ provided:

- System Water Boost Pump
- Water Treatment System
- Particulate Water Filter and Pressure Gauges
- Water Storage Bladder Tank(s)
- Nylon Water Tubing and Fittings to Peak+ Solenoid Valves and Media Frames

#### Contractor provided:

- Electrical service to Boost Pump
- Main, Branch and Unit Manifold water distribution piping, fittings, valves, hangers, piping support stands and recommended insulation and/or UV protection where required
- Provide and install field engineered mechanical equipment curb and / or installation of Peak+ provided equipment Roof Stand including seismic engineering and fastening as required
- Media Frame drain piping, fittings, hangers, and piping support stands
- Water Connection Equipment and Distribution System flushing, brine tank salt (if softener equipment is provided) and factory supervised water treatment system setup and commissioning (if applicable).
- Customer approved Mechanical, Electrical, Plumbing and Structural Engineered drawings and municipal permits, as required



## **Peak+ System Installation Scope of Work continued**

- Provide customer with Method of Procedure and/or Mechanical Installation Schedule documentation, as required
- Maintenance of Peak+ equipment as recommended by Peak+

### **Installation of Peak+ System shall conform to Peak+ Documentation as provided by:**

- Peak+ System Engineered Documentation provided for each system installation
- Online Training (Coming Soon)
- Installation guidelines provided in the latest release of Peak+ IOM Manual available on-line on Peak+ website and provided with each system shipped
- Installation Plumbing Specifications provided in the Peak+ Specifications
- General Mechanical and Water Distribution System Piping Layout Document EC0062 included in Peak+ System Installation Scope of Work and in the Peak+ IOM Manual
- Startup and Verification Report documentation provided in Peak+ IOM Manual
- Peak+ defined Preventative Maintenance Schedule

### **Exclusions:**

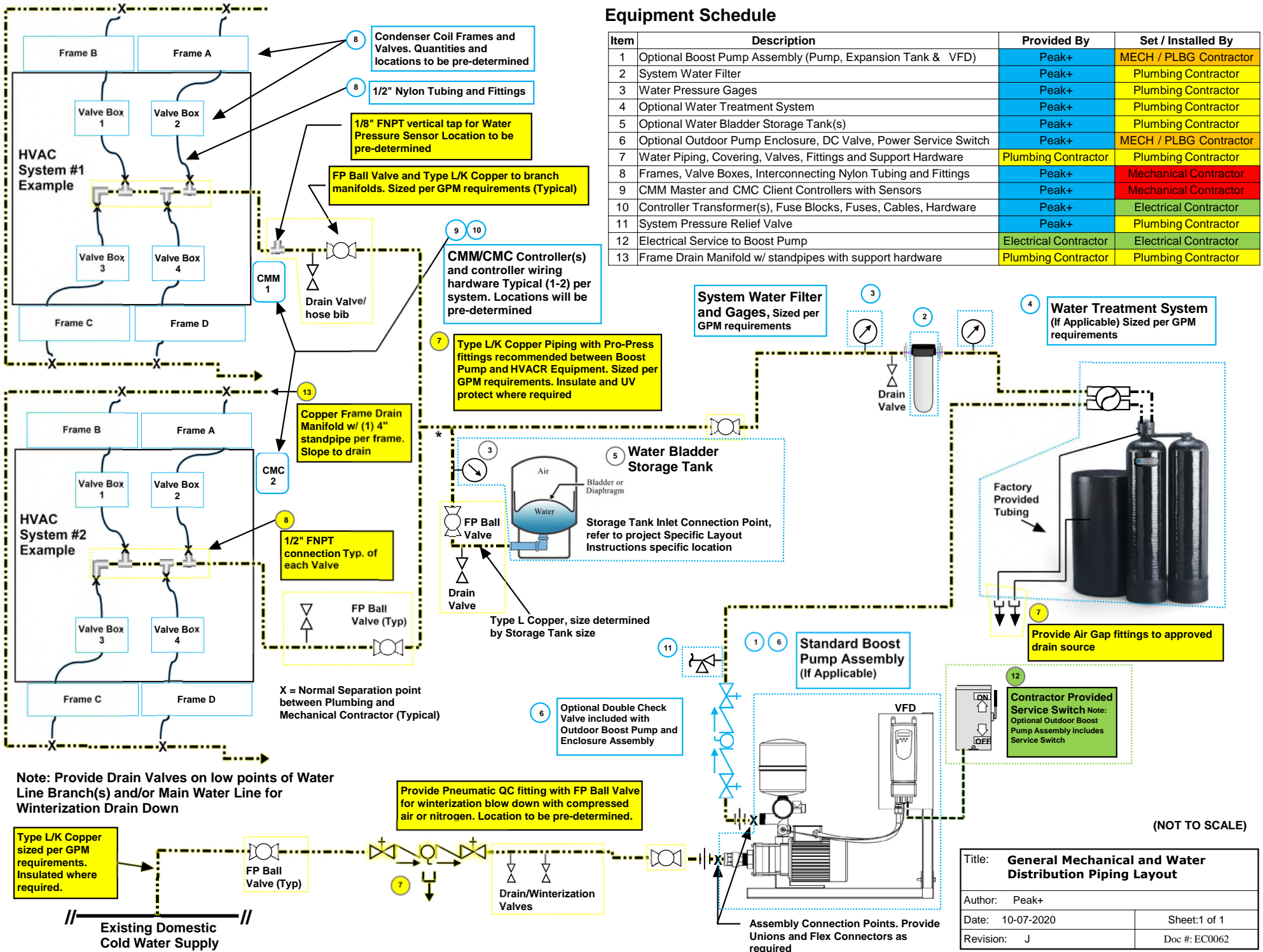
- Integration with the existing building BMS system unless BACnet controller communication option has been requested to be included with Peak+ System installation.

# General Mechanical and Water Distribution Piping Layout

See Project Specific Peak + System Layout for Specific Layout Instructions

## Equipment Schedule

Item	Description	Provided By	Set / Installed By
1	Optional Boost Pump Assembly (Pump, Expansion Tank & VFD)	Peak+	MECH / PLBG Contractor
2	System Water Filter	Peak+	Plumbing Contractor
3	Water Pressure Gages	Peak+	Plumbing Contractor
4	Optional Water Treatment System	Peak+	Plumbing Contractor
5	Optional Water Bladder Storage Tank(s)	Peak+	Plumbing Contractor
6	Optional Outdoor Pump Enclosure, DC Valve, Power Service Switch	Peak+	MECH / PLBG Contractor
7	Water Piping, Covering, Valves, Fittings and Support Hardware	Plumbing Contractor	Plumbing Contractor
8	Frames, Valve Boxes, Interconnecting Nylon Tubing and Fittings	Peak+	Mechanical Contractor
9	CMM Master and CMC Client Controllers with Sensors	Peak+	Mechanical Contractor
10	Controller Transformer(s), Fuse Blocks, Fuses, Cables, Hardware	Peak+	Electrical Contractor
11	System Pressure Relief Valve	Peak+	Plumbing Contractor
12	Electrical Service to Boost Pump	Electrical Contractor	Electrical Contractor
13	Frame Drain Manifold w/ standpipes with support hardware	Plumbing Contractor	Plumbing Contractor



Note: Provide Drain Valves on low points of Water Line Branch(s) and/or Main Water Line for Winterization Drain Down

Type L/K Copper sized per GPM requirements. Insulated where required.

Existing Domestic Cold Water Supply

(NOT TO SCALE)

Title: <b>General Mechanical and Water Distribution Piping Layout</b>	
Author: Peak+	Sheet: 1 of 1
Date: 10-07-2020	Doc #: EC0062
Revision: J	